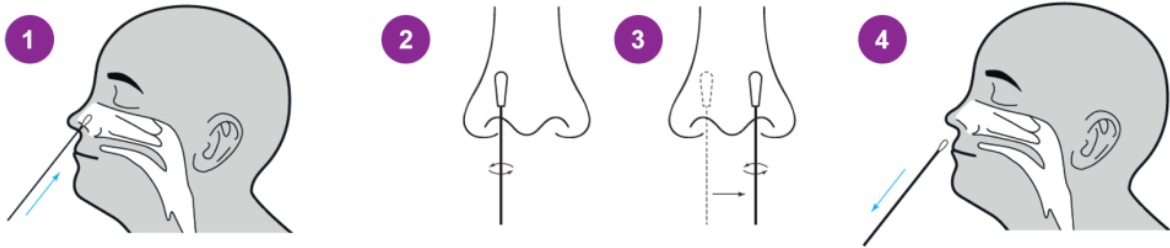


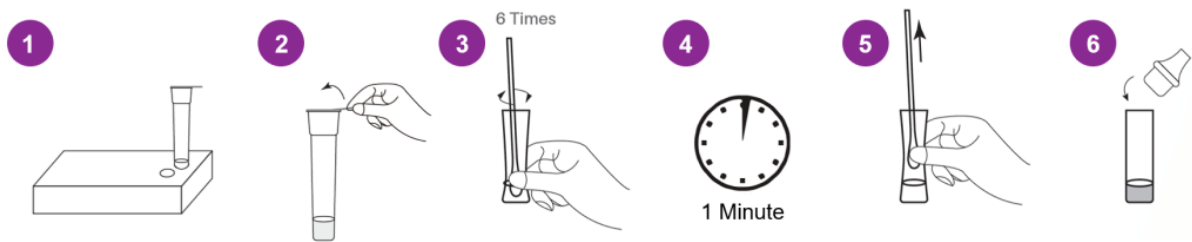
HOW IT WORKS

SPECIMEN COLLECTION



1. Insert the swab into one nostril of the patient. The swab tip should be inserted up to 2-4 cm until resistance is met.
2. Roll the swab 5 times along the mucosa inside the nostril. Using the same swab, repeat this process for the other nostril.
3. Withdraw the swab from nasal cavity.

SAMPLE PREPARATION



4. Insert the test extraction tube into the hole on the kit as marked.
5. Tear off the sealing film on the extraction tube gently to avoid spilling out the liquid.
6. Insert the swab into the extraction tube which contains 0.3 mL of the extraction buffer. Roll the swab at least 6 times while pressing the head against the bottom and side of the extraction tube.
7. Leave the swab in the extraction buffer for 1 minute. Squeeze the tube several times from the outside to immerse the swab. Remove the swab.
8. Insert the tip into the extraction tube.

RESULTS INTERPRETATION

